

MONTHLY MEMBERSHIP PROGRESS REPORT

LOCATION REP OF BANGLADESH

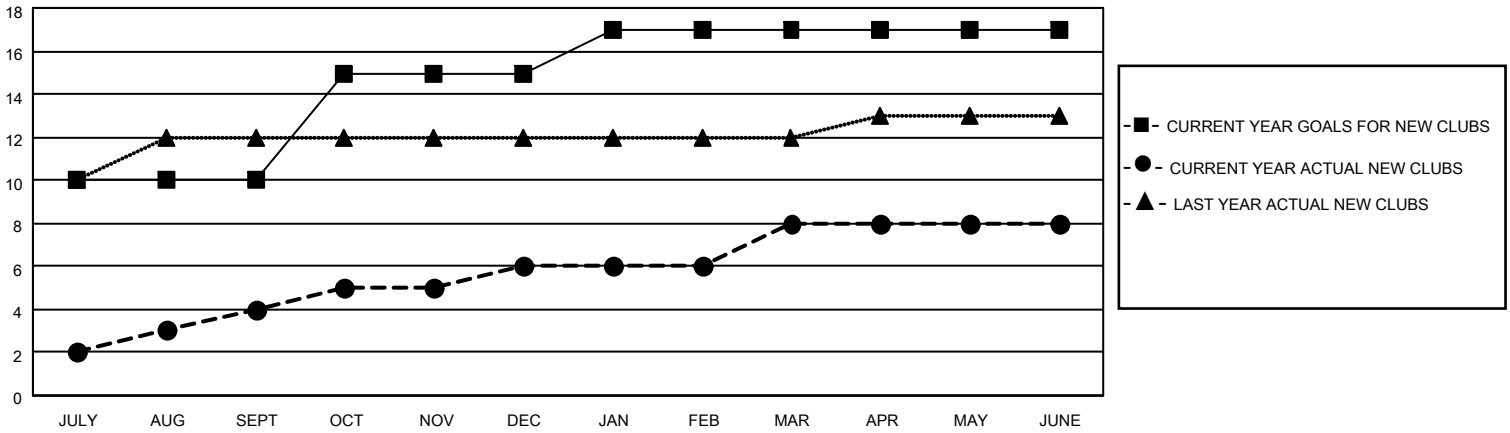
District 315A2

Results as of: 6/30/2023

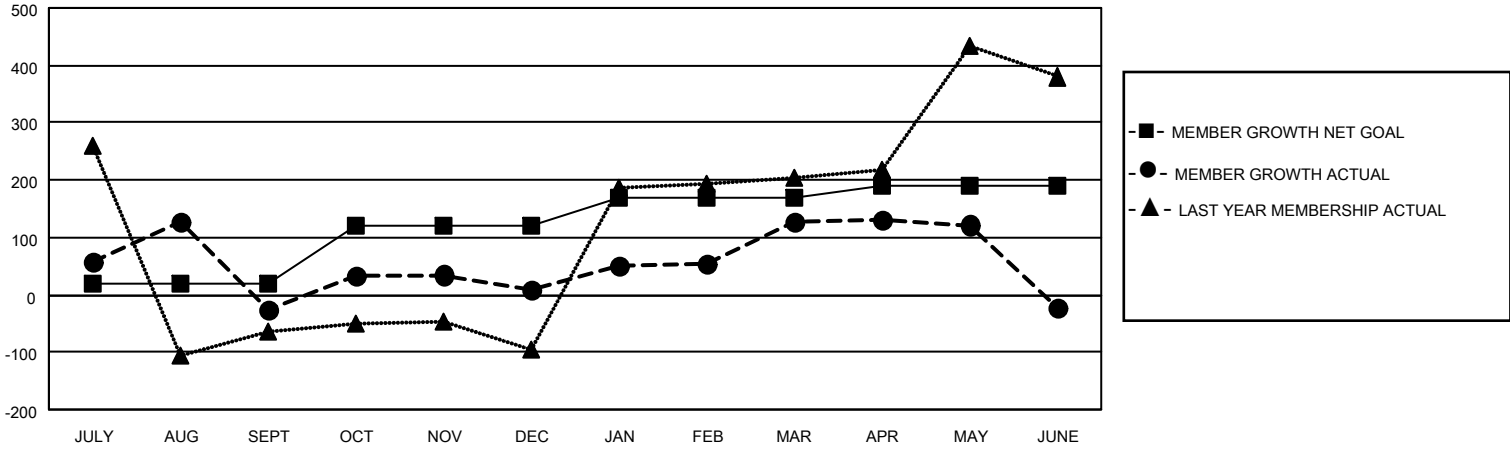
Clubs			
RESULTS FOR 2022-2023			
QUARTER	NEW CLUB GOAL	NEW CLUBS	DROPPED CLUBS
JULY/AUG/SEPT	10	4	0
OCT/NOV/DEC	5	2	5
JAN/FEB/MAR	2	2	1
APR/MAY/JUNE	0	0	0

Members			
RESULTS FOR 2022-2023			
QUARTER	MEMBER GROWTH NET GOAL	MEMBER GROWTH ACTUAL	DROPPED MEMBERS ACTUAL (including transfers)
JULY/AUG/SEPT	20	185	205
OCT/NOV/DEC	100	140	100
JAN/FEB/MAR	50	161	41
APR/MAY/JUNE	20	247	323

GOALS AND ACTUAL NEW CLUBS CUMULATIVE



GOALS AND ACTUAL MEMBERS CUMULATIVE



DROPPED CLUBS: 6

69 CLUBS OF 95 ADDED 1 OR MORE NEW MEMBERS

GENDER DISTRIBUTION

DROPPED MEMBERS

DECEASED	1
CLUB CANCELLED	42
OTHER	626
TOTAL	669

[CLICK HERE FOR CUMULATIVE MEMBERSHIP DATA](#)

MALE	1,928 (70.62%)
FEMALE	802 (29.38%)
NON BINARY	0 (0.00%)
PREFER NOT TO ANSWER	0 (0.00%)

TOTAL FAMILY UNIT MEMBERS 1,810

FAMILY MEMBERS PAYING HALF DUES 1,340